

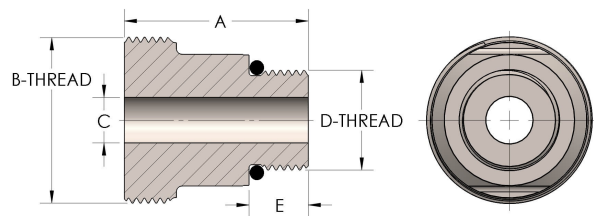


Product Category

Part Description

59T-8-SS316L

Male Straight Thread



DIMENSIONS

| | |
|----------|---------------|
| A | 2.500 |
| B-THREAD | 3.750" - 12UN |
| C | 1.75 |
| D-THREAD | 3.000" - 12UN |
| E | 0.63 |

GENERAL

| | |
|----------------------|---|
| Pressure Rating | 3000 PSI |
| Threadpiece Material | 316/L Stainless Steel, ASTM A276, UNS S31600/03 |