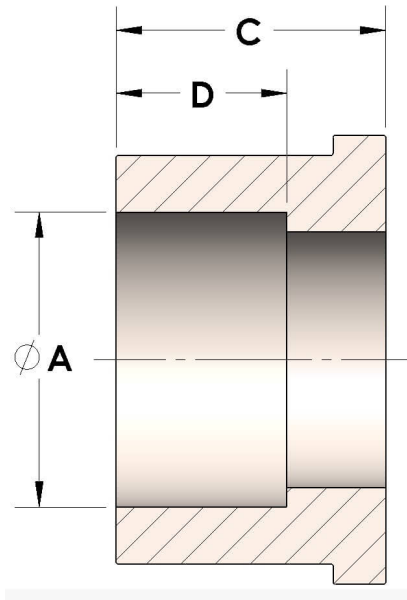




Product Category
Part Description

H849R-24-SS316L
Socketweld/braze Tube Tailpiece



DIMENSIONS

A	1.500
C	0.94
D	0.630

GENERAL

Pressure Rating	3000 PSI
Tailpiece Material	316/L Stainless Steel, ASTM A276, UNS S31600/03

cpvmfg.com | 484.731.4010

The complete catalog contents must be reviewed to ensure that the system designer and user make a safe product selection. When selecting products, the total system design must be considered to ensure safe, trouble-free performance. Function, material compatibility, adequate ratings, proper installation, operation, and maintenance are the responsibilities of the system designer and user. Caution: Do not mix or interchange valve components with those of other manufacturers.