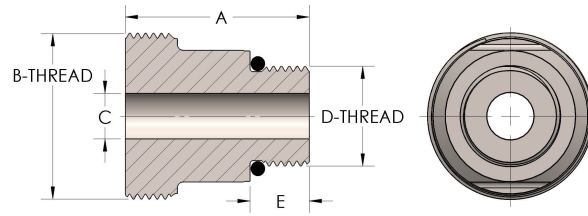




Product Category
Part Description

59T-6-S
Male Straight Thread



DIMENSIONS

A	2.380
B-THREAD	2.750" - 12UN
C	1.19
D-THREAD	1.875" - 12UN
E	0.63

GENERAL

Pressure Rating	6000 PSI
Threadpiece Material	Carbon Steel, ASTM A108

The complete catalog contents must be reviewed to ensure that the system designer and user make a safe product selection. When selecting products, the total system design must be considered to ensure safe, trouble-free performance. Function, material compatibility, adequate ratings, proper installation, operation, and maintenance are the responsibilities of the system designer and user. Caution: Do not mix or interchange valve components with those of other manufacturers.