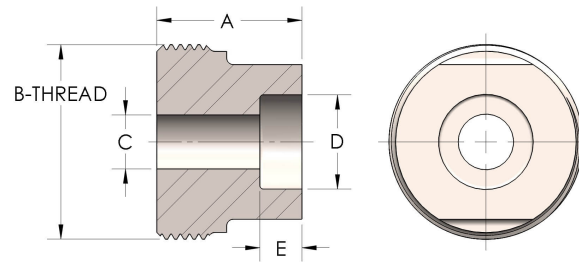




Product Category
Part Description

48T-4-CUNI
Socketweld Tube



DIMENSIONS

A	1.310
B-THREAD	2.000" - 12UN
C	0.63
D	1.002
E	0.56

GENERAL

Pressure Rating	4500 PSI
Threadpiece Material	Copper Nickel 70/30, MIL-C--15726F, UNS C71500

The complete catalog contents must be reviewed to ensure that the system designer and user make a safe product selection. When selecting products, the total system design must be considered to ensure safe, trouble-free performance. Function, material compatibility, adequate ratings, proper installation, operation, and maintenance are the responsibilities of the system designer and user. Caution: Do not mix or interchange valve components with those of other manufacturers.