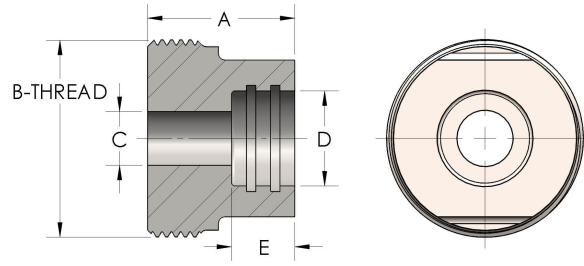




Product Category
Part Description

52T-0-SS316L
Socket Braze Pipe



DIMENSIONS

| | |
|----------|----------------|
| A | 0.880 |
| B-THREAD | 1.000" - 14UNS |
| C | 0.22 |
| D | 0.408 |
| E | 0.38 |

GENERAL

| | |
|-----------------------------|---|
| Pressure Rating | 6000 PSI |
| Threadpiece Material | 316/L Stainless Steel, ASTM A276, UNS S31600/03 |

cpvmfg.com | 484.731.4010

The complete catalog contents must be reviewed to ensure that the system designer and user make a safe product selection. When selecting products, the total system design must be considered to ensure safe, trouble-free performance. Function, material compatibility, adequate ratings, proper installation, operation, and maintenance are the responsibilities of the system designer and user. Caution: Do not mix or interchange valve components with those of other manufacturers.