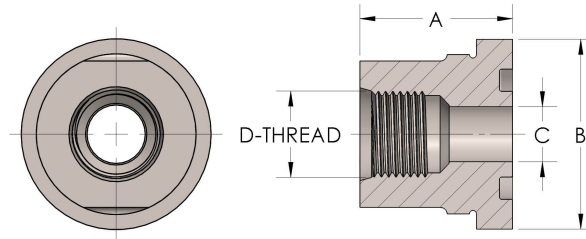




Product Category
Part Description

64R-8-7-SS316L
Female Straight Thread



DIMENSIONS

| | |
|-----------------|---------------|
| A | 1.750 |
| B | 3.63 |
| C | 1.75 |
| D-THREAD | 2.500" - 12UN |

GENERAL

| | |
|---------------------------|--|
| Pressure Rating | 3000 PSI |
| Tailpiece Material | 316/L Stainless Steel, ASTM A276, UNS S31600/03 |
| O-Ring Material | Viton® Fluorocarbon Type 1, Class 2 (90 durometer) |

cpvmfg.com | 484.731.4010

The complete catalog contents must be reviewed to ensure that the system designer and user make a safe product selection. When selecting products, the total system design must be considered to ensure safe, trouble-free performance. Function, material compatibility, adequate ratings, proper installation, operation, and maintenance are the responsibilities of the system designer and user. Caution: Do not mix or interchange valve components with those of other manufacturers.