

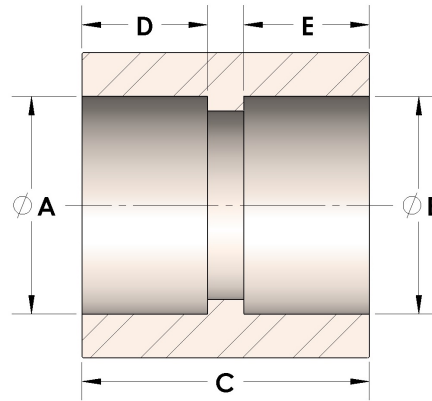


Product Category

100-6-S

Part Description

Direct Socketweld/Braze Coupling (Pipe)



DIMENSIONS

| | |
|---|-------|
| A | 1.675 |
| B | 1.68 |
| C | 1.50 |
| D | 0.500 |
| E | 0.50 |

GENERAL

| | |
|------------------|-------------------------|
| Pressure Rating | 6000 PSI |
| Fitting Material | Carbon Steel, ASTM A108 |