

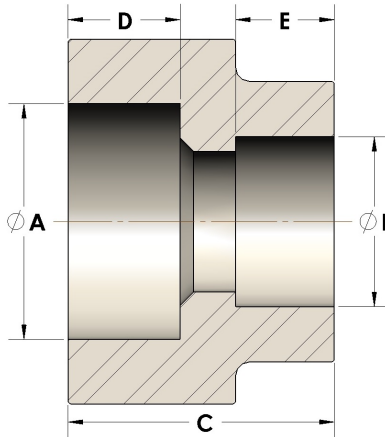


Product Category

107-1-04-CUNI

Part Description

Direct Socketweld/Braze Coupling (Pipe X Tube)



DIMENSIONS

| | |
|---|-------|
| A | 0.545 |
| B | 0.25 |
| C | 0.88 |
| D | 0.380 |

GENERAL

| | |
|------------------|--|
| Pressure Rating | 6000 PSI |
| Fitting Material | Copper Nickel 70/30, MIL-C--15726F, UNS C71500 |