

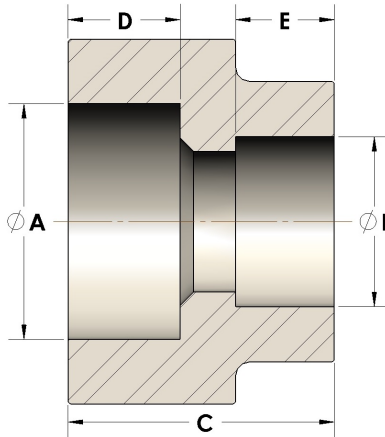


Product Category

107-4-10-SS316L

Part Description

Direct Socketweld/Braze Coupling (Pipe X Tube)



DIMENSIONS

A	1.055
B	0.63
C	1.19
D	0.500

GENERAL

Pressure Rating	6000 PSI
Fitting Material	316/L Stainless Steel, ASTM A276, UNS S31600/03