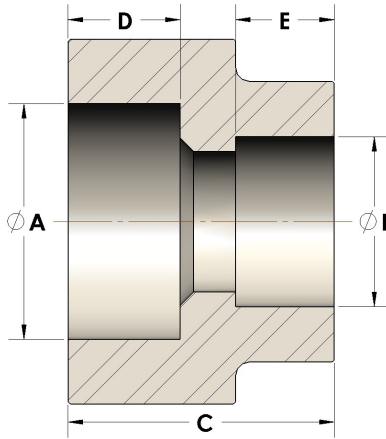


Product Category

107-5-12-SS316L

Part Description

Direct Socketweld/Braze Coupling (Pipe X Tube)



DIMENSIONS

A	1.320
B	0.75
C	1.31
D	0.560

GENERAL

Pressure Rating	6000 PSI
Fitting Material	316/L Stainless Steel, ASTM A276, UNS S31600/03