

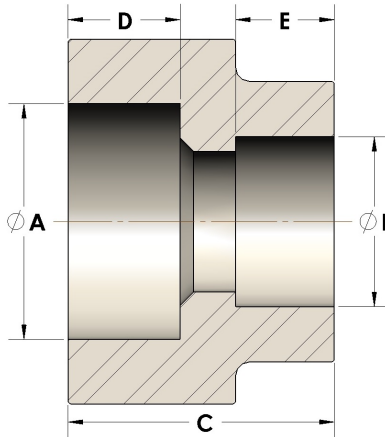


Product Category

107-6-16-SS316L

Part Description

Direct Socketweld/Braze Coupling (Pipe X Tube)



DIMENSIONS

| | |
|---|-------|
| A | 1.665 |
| B | 1.00 |
| C | 1.44 |
| D | 0.630 |

GENERAL

| | |
|------------------|---|
| Pressure Rating | 6000 PSI |
| Fitting Material | 316/L Stainless Steel, ASTM A276, UNS S31600/03 |