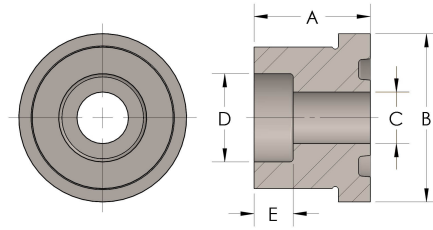


Product Category

48R-1-SS316L

Part Description

Socketweld Tube



## DIMENSIONS

A	1.060
B	1.06
C	0.31
D	0.380
E	0.38

## GENERAL

Pressure Rating	6000 PSI
Tailpiece Material	316/L Stainless Steel, ASTM A276, UNS S31600/03
O-Ring Material	Viton® Fluorocarbon Type 1, Class 2 (90 durometer)