

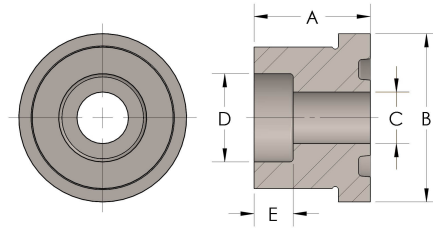


Product Category

48R-6-SS316L

Part Description

Socketweld Tube



DIMENSIONS

A	1.380
B	2.63
C	1.19
D	1.500
E	0.69

GENERAL

Pressure Rating	6000 PSI
Tailpiece Material	316/L Stainless Steel, ASTM A276, UNS S31600/03
O-Ring Material	Viton® Fluorocarbon Type 1, Class 2 (90 durometer)