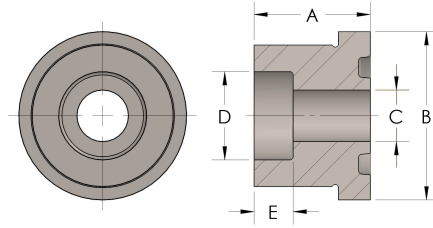


Product Category

48R-9-SS316L

Part Description

Socketweld Tube



## DIMENSIONS

A	2.000
B	4.31
C	2.13
D	3.000
E	1.00

## GENERAL

Pressure Rating	4500 PSI
Tailpiece Material	316/L Stainless Steel, ASTM A276, UNS S31600/03
O-Ring Material	Viton® Fluorocarbon Type 1, Class 2 (90 durometer)