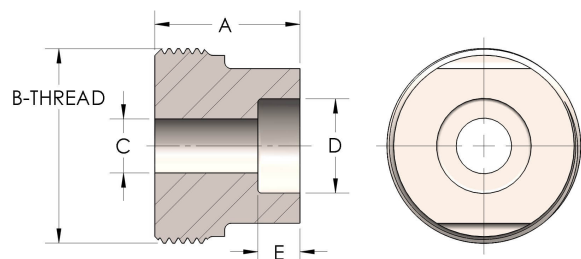




Product Category
Part Description

48T-5-S
Socketweld Tube



DIMENSIONS

| | |
|----------|----------------|
| A | 1.560 |
| B-THREAD | 2.313" - 12UNS |
| C | 0.81 |
| D | 1.252 |
| E | 0.63 |

GENERAL

| | |
|----------------------|-------------------------|
| Pressure Rating | 6000 PSI |
| Threadpiece Material | Carbon Steel, ASTM A108 |

The complete catalog contents must be reviewed to ensure that the system designer and user make a safe product selection. When selecting products, the total system design must be considered to ensure safe, trouble-free performance. Function, material compatibility, adequate ratings, proper installation, operation, and maintenance are the responsibilities of the system designer and user. Caution: Do not mix or interchange valve components with those of other manufacturers.