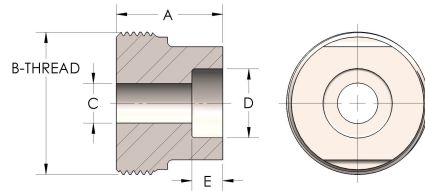


Product Category

48T-6-SS316L

Part Description

Socketweld Tube



## DIMENSIONS

<b>A</b>	1.690
<b>B-THREAD</b>	2.750" - 12UN
<b>C</b>	1.19
<b>D</b>	1.502
<b>E</b>	0.69

## GENERAL

<b>Pressure Rating</b>	6000 PSI
<b>Threadpiece Material</b>	316/L Stainless Steel, ASTM A276, UNS S31600/03