

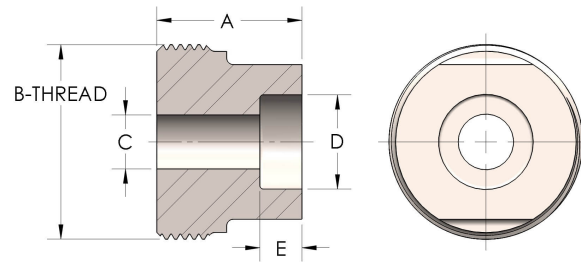


Product Category

Part Description

48T-7-CUNI

Socketweld Tube



DIMENSIONS

| | |
|----------|----------------|
| A | 2.000 |
| B-THREAD | 3.063" - 12UNS |
| C | 1.38 |
| D | 2.002 |
| E | 0.75 |

GENERAL

| | |
|----------------------|------------------------------------------------|
| Pressure Rating | 2500 PSI |
| Threadpiece Material | Copper Nickel 70/30, MIL-C--15726F, UNS C71500 |