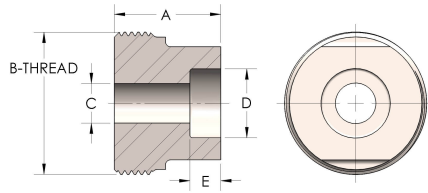


Product Category

48T-7-SS316L

Part Description

Socketweld Tube



## DIMENSIONS

<b>A</b>	2.000
<b>B-THREAD</b>	3.063" - 12UNS
<b>C</b>	1.38
<b>D</b>	2.002
<b>E</b>	0.75

## GENERAL

<b>Pressure Rating</b>	4500 PSI
<b>Threadpiece Material</b>	316/L Stainless Steel, ASTM A276, UNS S31600/03