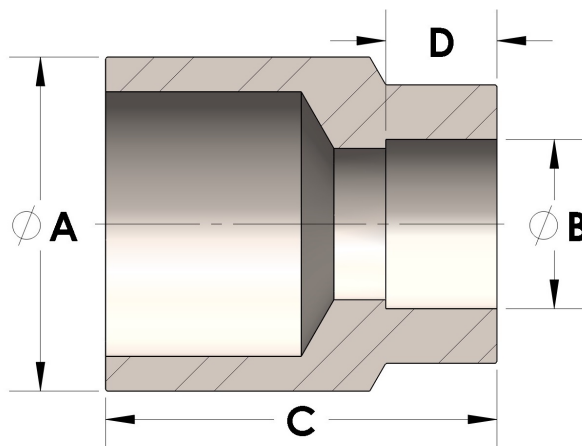




**Product Category**  
**Part Description**

57-8-6-SS316L  
Direct Weld/Braze Insert (Male Pipe X Pipe SW)



## DIMENSIONS

A	2.375
B	1.68
C	2.38
D	0.690

## GENERAL

Pressure Rating	6000 PSI
Fitting Material	316/L Stainless Steel, ASTM A276, UNS S31600/03