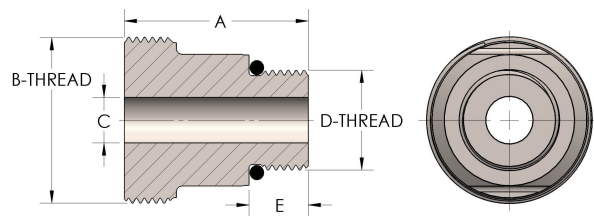




**Product Category**  
**Part Description**

59T-1-SS316L  
Male Straight Thread



**DIMENSIONS**

<b>A</b>	1.560
<b>B-THREAD</b>	1.188" - 12UN
<b>C</b>	0.30
<b>D-THREAD</b>	9/16" - 18UNF
<b>E</b>	0.43

**GENERAL**

<b>Pressure Rating</b>	6000 PSI
<b>Threadpiece Material</b>	316/L Stainless Steel, ASTM A276, UNS S31600/03

The complete catalog contents must be reviewed to ensure that the system designer and user make a safe product selection. When selecting products, the total system design must be considered to ensure safe, trouble-free performance. Function, material compatibility, adequate ratings, proper installation, operation, and maintenance are the responsibilities of the system designer and user. Caution: Do not mix or interchange valve components with those of other manufacturers.