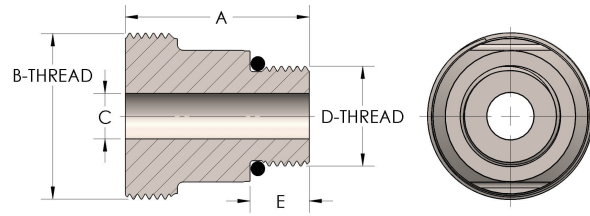




**Product Category**  
**Part Description**

59T-2-SS316L  
Male Straight Thread



## DIMENSIONS

A	1.690
B-THREAD	1.375" - 12UNF
C	0.39
D-THREAD	3/4" - 16UNF
E	0.47

## GENERAL

Pressure Rating	6000 PSI
Threadpiece Material	316/L Stainless Steel, ASTM A276, UNS S31600/03

cpvmfg.com | 484.731.4010

The complete catalog contents must be reviewed to ensure that the system designer and user make a safe product selection. When selecting products, the total system design must be considered to ensure safe, trouble-free performance. Function, material compatibility, adequate ratings, proper installation, operation, and maintenance are the responsibilities of the system designer and user. Caution: Do not mix or interchange valve components with those of other manufacturers.