

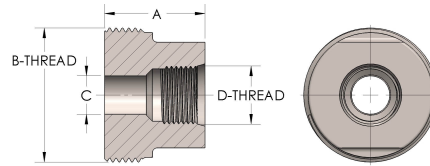


Product Category

64T-4-3-S

Part Description

Female Straight Thread



DIMENSIONS

| | |
|----------|---------------|
| A | 1.310 |
| B-THREAD | 2.000" - 12UN |
| C | 0.63 |
| D-THREAD | 1.063" - 12UN |

GENERAL

| | |
|----------------------|-------------------------|
| Pressure Rating | 6000 PSI |
| Threadpiece Material | Carbon Steel, ASTM A108 |