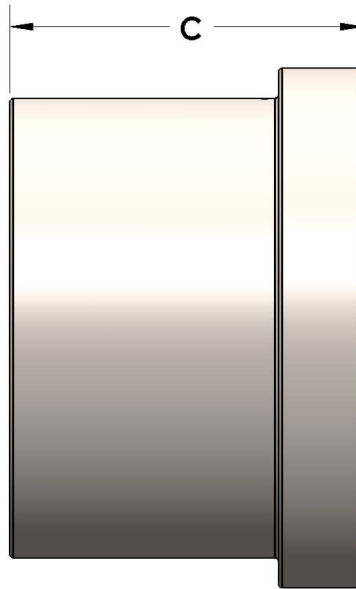




**Product Category**  
**Part Description**

H804R-02-SS316L  
Blank Tailpiece



## DIMENSIONS

D

0.380

## GENERAL

**Pressure Rating**

6000 PSI

**Tailpiece Material**

316/L Stainless Steel, ASTM A276, UNS S31600/03

cpvmfg.com | 484.731.4010

The complete catalog contents must be reviewed to ensure that the system designer and user make a safe product selection. When selecting products, the total system design must be considered to ensure safe, trouble-free performance. Function, material compatibility, adequate ratings, proper installation, operation, and maintenance are the responsibilities of the system designer and user. Caution: Do not mix or interchange valve components with those of other manufacturers.