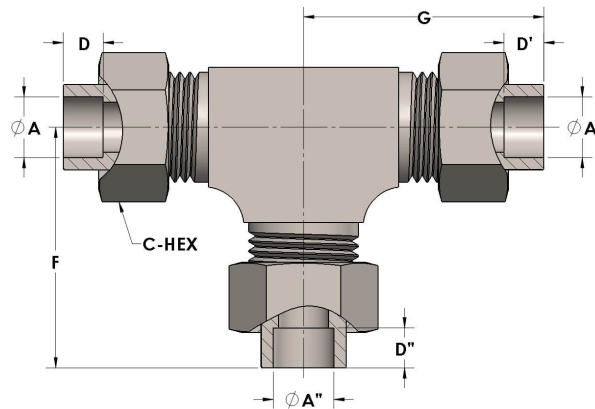




**Product Category**  
**Part Description**

H810-12-12-10-S  
Socketweld/braze Tube Tee Assembly



## DIMENSIONS

|       |       |
|-------|-------|
| A     | 0.750 |
| A'    | 0.750 |
| A''   | 0.630 |
| C-HEX | 1.38  |
| D     | 0.440 |
| D'    | 0.440 |
| D''   | 0.380 |
| F     | 2.25  |
| G     | 2.25  |

## GENERAL

|                   |  |
|-------------------|--|
| Pressure Rating   | 4500 PSI   |
| Assembly Material | Carbon Steel, ASTM A108                            |
| O-Ring Material   | Viton® Fluorocarbon Type 1, Class 2 (90 durometer) |
| Connection 1 Type | Female Tube Socket                                 |
| Connection 1 Size | 3/4" Tube O.D. (-12)                               |
| Connection 2 Type | Female Tube Socket                                 |
| Connection 2 Size | 3/4" Tube O.D. (-12)                               |
| Connection 3 Type | Female Tube Socket                                 |

The complete catalog contents must be reviewed to ensure that the system designer and user make a safe product selection. When selecting products, the total system design must be considered to ensure safe, trouble-free performance. Function, material compatibility, adequate ratings, proper installation, operation, and maintenance are the responsibilities of the system designer and user. Caution: Do not mix or interchange valve components with those of other manufacturers.