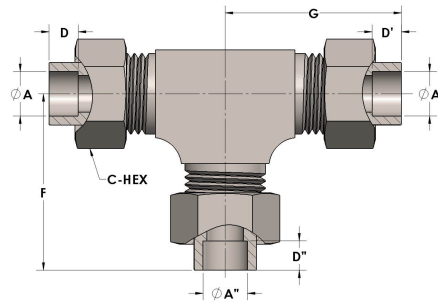




Product Category  
Part Description

H810-16-16-12-SS316L  
Socketweld/braze Tube Tee Assembly



## DIMENSIONS

A	1.000
A'	1.000
A''	0.750
C-HEX	1.63
D	0.500
D'	0.500
D''	0.440
F	2.75
G	2.75



## GENERAL

Pressure Rating	4500 PSI
Assembly Material	316/L Stainless Steel, ASTM A276, UNS S31600/03
O-Ring Material	Viton® Fluorocarbon Type 1, Class 2 (90 durometer)
Connection 1 Type	Female Tube Socket
Connection 1 Size	1" Tube O.D. (-16)
Connection 2 Type	Female Tube Socket
Connection 2 Size	1" Tube O.D. (-16)
Connection 3 Type	Female Tube Socket
Connection 3 Size	3/4" Tube O.D. (-12)