

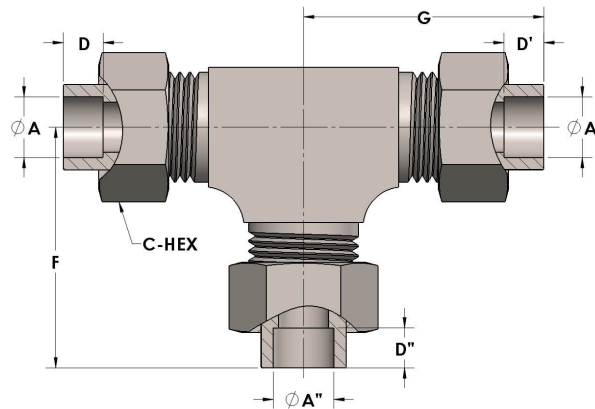


Product Category

Part Description

H810-16-S

Socketweld/braze Tube Tee Assembly



DIMENSIONS

A	
A''	
A'	
C-HEX	1.63
D	
D''	
D'	
F	
G	2.75

GENERAL

Pressure Rating	3000 PSI
Assembly Material	Carbon Steel, ASTM A108
O-Ring Material	Viton® Fluorocarbon Type 1, Class 2 (90 durometer)
Connection 1 Type	Female Tube Socket
Connection 1 Size	1" Tube O.D. (-16)
Connection 2 Type	Female Tube Socket
Connection 2 Size	1" Tube O.D. (-16)
Connection 3 Type	Female Tube Socket
Connection 3 Size	1" Tube O.D. (-16)