

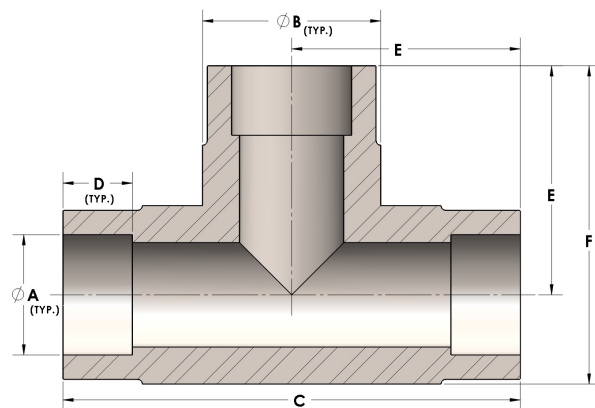


Product Category

Part Description

H830-06-S

Direct Socketweld/Braze Tee (Tube)



## DIMENSIONS

|   |       |
|---|-------|
| A | 0.380 |
| B | 0.63  |
| C | 1.63  |
| D | 0.250 |
| E | 0.81  |
| F | 1.13  |

## GENERAL

|                  |                         |
|------------------|-------------------------|
| Pressure Rating  | 6000 PSI                |
| Fitting Material | Carbon Steel, ASTM A108 |