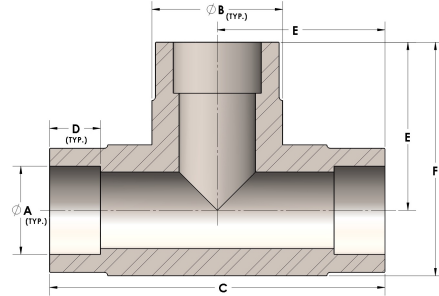


**Product Category**  
**Part Description**

H830-08-CUNI  
Direct Socketweld/Braze Tee (Tube)



## DIMENSIONS

<b>A</b>	0.500
<b>B</b>	0.75
<b>C</b>	2.13
<b>D</b>	0.310
<b>E</b>	1.06
<b>F</b>	1.44

## GENERAL

<b>Pressure Rating</b>	3000 PSI
<b>Fitting Material</b>	Copper Nickel 70/30, MIL-C--15726F, UNS C71500