

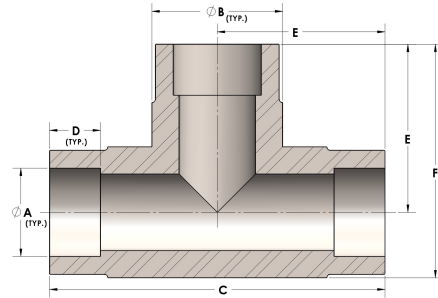


Product Category

H830-24-S

Part Description

Direct Socketweld/Braze Tee (Tube)



## DIMENSIONS

A	1.500
B	1.88
C	4.38
D	0.630
E	2.19
F	3.13

## GENERAL

Pressure Rating	4500 PSI
Fitting Material	Carbon Steel, ASTM A108