

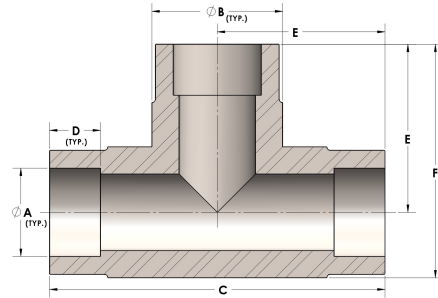


Product Category

H830-24-SS316L

Part Description

Direct Socketweld/Braze Tee (Tube)



DIMENSIONS

| | |
|---|-------|
| A | 1.500 |
| B | 1.88 |
| C | 4.38 |
| D | 0.630 |
| E | 2.19 |
| F | 3.13 |

GENERAL

| | |
|------------------|---|
| Pressure Rating | 3000 PSI |
| Fitting Material | 316/L Stainless Steel, ASTM A276, UNS S31600/03 |