

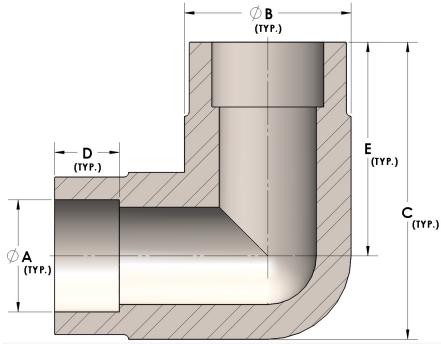


Product Category

H840-10-SS316L

Part Description

Direct Socketweld/Braze 90° Elbow (Tube)



DIMENSIONS

A	0.630
B	0.88
C	1.63
D	0.380
E	1.19

GENERAL

Pressure Rating	4500 PSI
Fitting Material	316/L Stainless Steel, ASTM A276, UNS S31600/03