

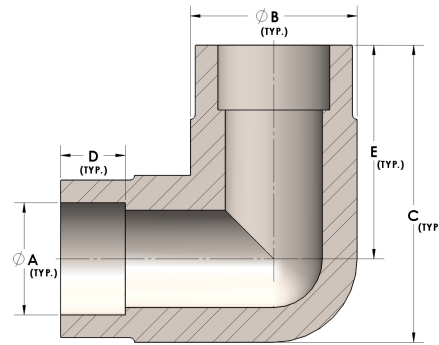


Product Category

H840-16-CUNI

Part Description

Direct Socketweld/Braze 90° Elbow (Tube)



## DIMENSIONS

A	1.000
B	1.38
C	2.25
D	0.500
E	1.56

## GENERAL

Pressure Rating	2500 PSI
Fitting Material	Copper Nickel 70/30, MIL-C--15726F, UNS C71500