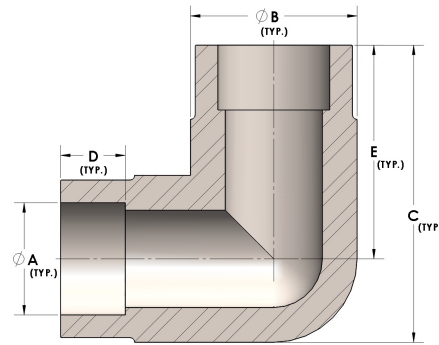




Product Category  
Part Description

H840-20-SS316L  
Direct Socketweld/Braze 90° Elbow (Tube)



## DIMENSIONS

A	1.250
B	1.63
C	2.75
D	0.560
E	1.94

## GENERAL

Pressure Rating	3000 PSI
Fitting Material	316/L Stainless Steel, ASTM A276, UNS S31600/03