

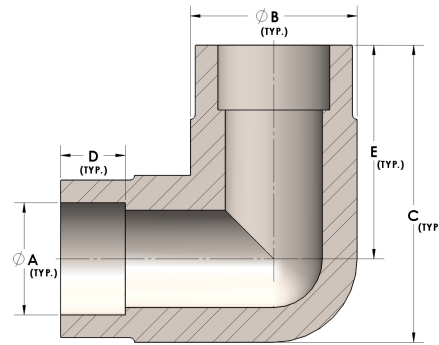


Product Category

H840-32-CUNI

Part Description

Direct Socketweld/Braze 90° Elbow (Tube)



DIMENSIONS

A	2.000
B	2.75
C	4.25
D	0.880
E	2.88

GENERAL

Pressure Rating	3000 PSI
Fitting Material	Copper Nickel 70/30, MIL-C--15726F, UNS C71500