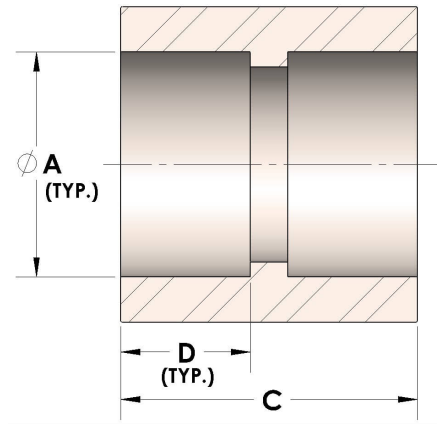




Product Category  
Part Description

H847-16-SS316L  
Direct Socketweld/Braze Coupling (Tube)



## DIMENSIONS

A	1.000
C	1.13
D	0.500

## GENERAL

Pressure Rating	4500 PSI
Fitting Material	316/L Stainless Steel, ASTM A276, UNS S31600/03