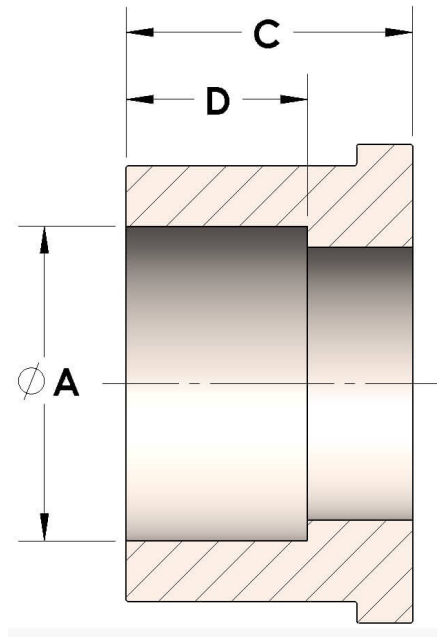


Product Category

Part Description

H849R-04-SS316L

Socketweld/braze Tube Tailpiece



## DIMENSIONS

|   |       |
|---|-------|
| A | 0.250 |
| C | 0.38  |
| D | 0.190 |

## GENERAL

|                    |   |
|--------------------|---|
| Pressure Rating    | 6000 PSI  |
| Tailpiece Material | 316/L Stainless Steel, ASTM A276, UNS S31600/03 |