

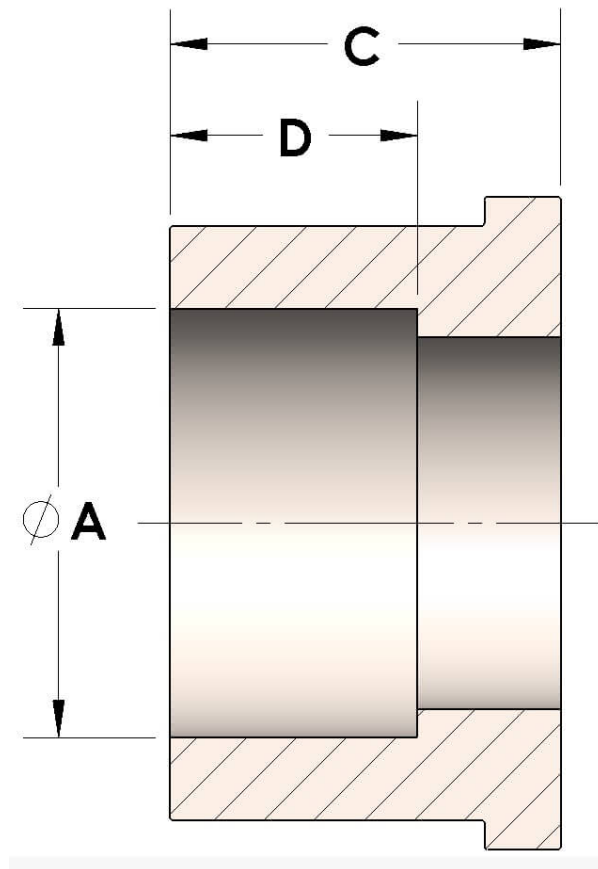


Product Category

Part Description

H849R-08-S

Socketweld/braze Tube Tailpiece



DIMENSIONS

| | |
|---|-------|
| A | 0.500 |
| C | 0.50 |
| D | 0.310 |

GENERAL

| | |
|--------------------|-------------------------|
| Pressure Rating | 4500 PSI |
| Tailpiece Material | Carbon Steel, ASTM A108 |

cpvmfg.com | 484.731.4010

The complete catalog contents must be reviewed to ensure that the system designer and user make a safe product selection. When selecting products, the total system design must be considered to ensure safe, trouble-free performance. Function, material compatibility, adequate ratings, proper installation, operation, and maintenance are the responsibilities of the system designer and user. Caution: Do not mix or interchange valve components with those of other manufacturers.