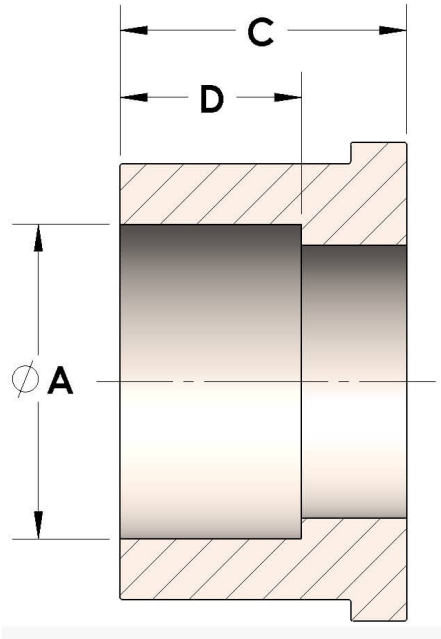




Product Category
Part Description

H849R-20-SS316L
Socketweld/braze Tube Tailpiece



DIMENSIONS

| | |
|---|-------|
| A | 1.250 |
| C | 0.88 |
| D | 0.560 |

GENERAL

| | |
|--------------------|---|
| Pressure Rating | 3000 PSI |
| Tailpiece Material | 316/L Stainless Steel, ASTM A276, UNS S31600/03 |