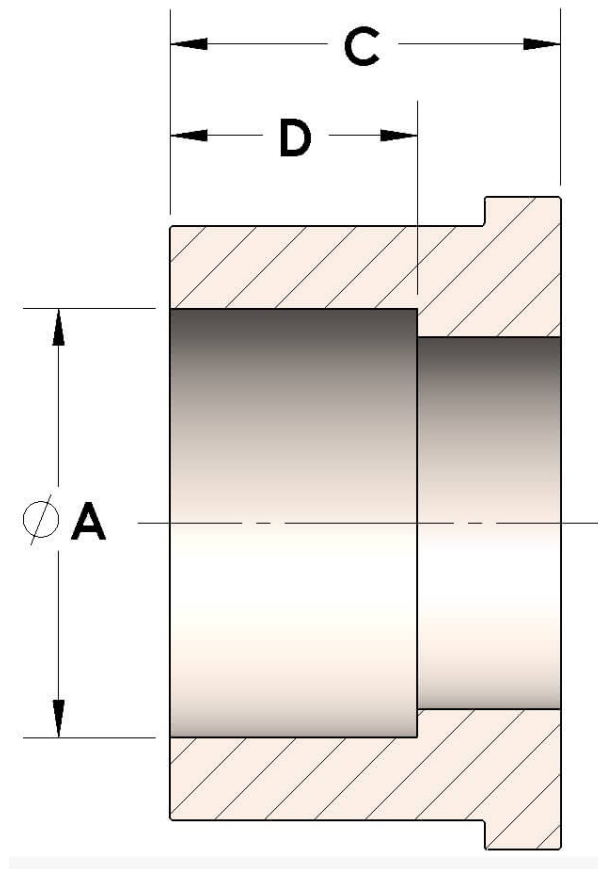




Product Category
Part Description

H851R-08-02-SS316L
Socketweld Pipe Tailpiece



DIMENSIONS

A	0.410
C	0.50
D	0.250
Union Nut Size	-8
Mark VIII Dash	-2

GENERAL

cpvmfg.com | 484.731.4010

Tailpiece Material 316/L Stainless Steel, ASTM A276, UNS S31600/03

The complete catalog contents must be reviewed to ensure that the system designer and user make a safe and correct selection. When selecting products, the total system design must be considered to ensure safe, trouble-free performance. Function, material compatibility, adequate ratings, proper installation, operation, and maintenance are the responsibilities of the system designer and user. Caution: Do not mix or interchange valve components with those of other manufacturers.