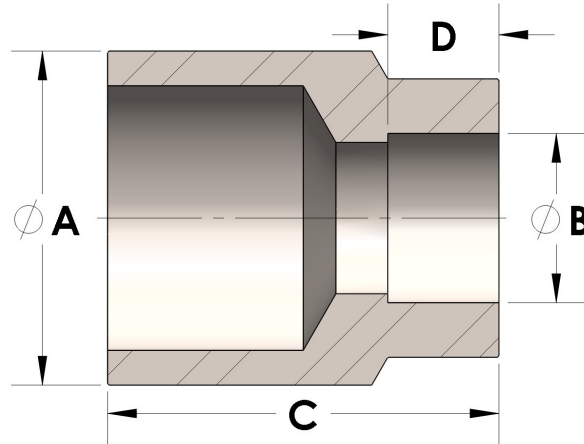




**Product Category**  
**Part Description**

H865-08-08-CUNI  
Direct Weld/Braze Insert (Male Pipe X Tube SW)



## DIMENSIONS

A	0.840
B	0.50
C	1.00
D	0.310

## GENERAL

Pressure Rating	4500 PSI
Fitting Material	Copper Nickel 70/30, MIL-C--15726F, UNS C71500