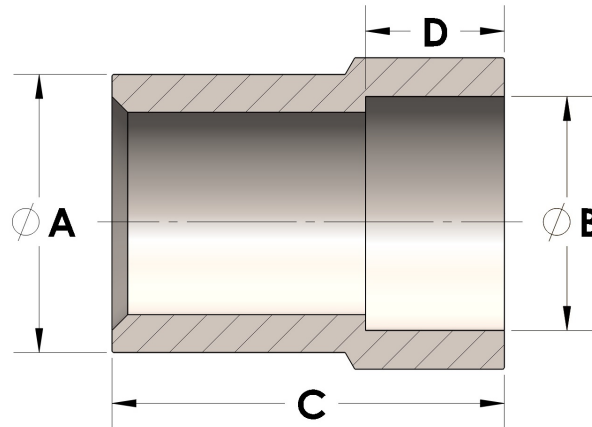




**Product Category**  
**Part Description**

H866-06-06-CUNI  
Direct Weld/Braze Insert (Male Tube X Pipe SW)



## DIMENSIONS

A

B

C

D

## GENERAL

**Pressure Rating**

2500 PSI

**Fitting Material**

Copper Nickel 70/30, MIL-C--15726F, UNS C71500

cpvmfg.com | 484.731.4010

The complete catalog contents must be reviewed to ensure that the system designer and user make a safe product selection. When selecting products, the total system design must be considered to ensure safe, trouble-free performance. Function, material compatibility, adequate ratings, proper installation, operation, and maintenance are the responsibilities of the system designer and user. Caution: Do not mix or interchange valve components with those of other manufacturers.