

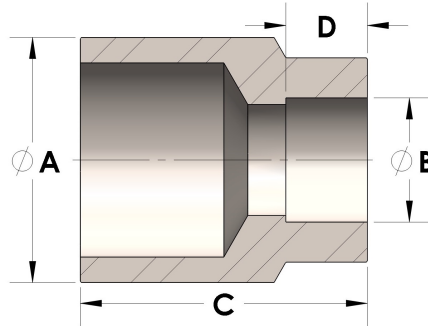


Product Category

H867-08-02-CUNI

Part Description

Direct Weld/Braze Insert (Male Tube X Tube SW)



DIMENSIONS

| | |
|---|-------|
| A | 0.500 |
| B | 0.13 |
| C | 0.81 |
| D | 0.190 |

GENERAL

| | |
|------------------|--|
| Pressure Rating | 3000 PSI |
| Fitting Material | Copper Nickel 70/30, MIL-C--15726F, UNS C71500 |