

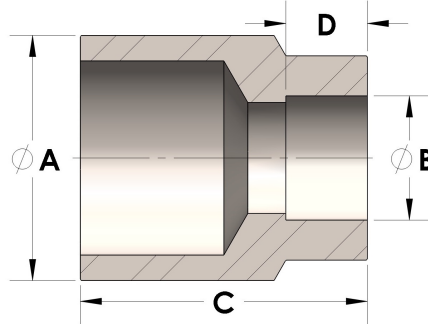


Product Category

H867-08-06-SS316L

Part Description

Direct Weld/Braze Insert (Male Tube X Tube SW)



DIMENSIONS

A	0.500
B	0.38
C	0.81
D	0.250

GENERAL

Pressure Rating	6000 PSI
Fitting Material	316/L Stainless Steel, ASTM A276, UNS S31600/03