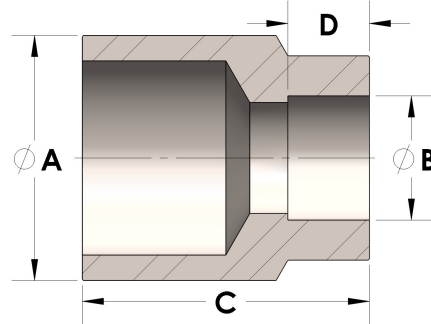


Product Category

H867-16-06-SS316L

Part Description

Direct Weld/Braze Insert (Male Tube X Tube SW)



DIMENSIONS

A	1.000
B	0.38
C	1.06
D	0.250

GENERAL

Pressure Rating	3000 PSI
Fitting Material	316/L Stainless Steel, ASTM A276, UNS S31600/03