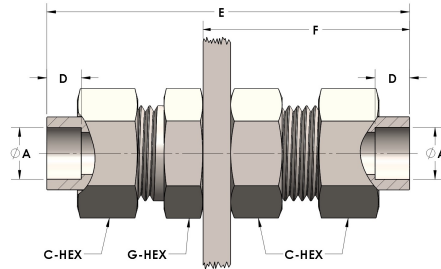


Product Category

H890-04-SS316L

Part Description

Socketweld/braze Tube Bulkhead Union Assembly



## DIMENSIONS

A	0.250
C-HEX	0.63
D	0.190
E	2.31
F	1.38
G-HEX	0.63
PANEL BORE DIA.	0.59

## GENERAL

Pressure Rating	6000 PSI
Assembly Material	316/L Stainless Steel, ASTM A276, UNS S31600/03
O-Ring Material	Viton® Fluorocarbon Type 1, Class 2 (90 durometer)
Connection 1 Type	Female Tube Socket
Connection 1 Size	1/4" Tube O.D. (-04)
Connection 2 Type	Female Tube Socket
Connection 2 Size	1/4" Tube O.D. (-04)