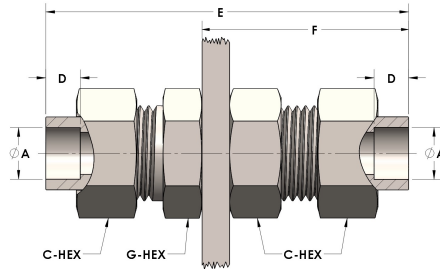


Product Category

H890-08-S

Part Description

Socketweld/braze Tube Bulkhead Union Assembly



DIMENSIONS

| | |
|-----------------|-------|
| A | 0.500 |
| C-HEX | 0.94 |
| D | 0.310 |
| E | 3.00 |
| F | 1.69 |
| G-HEX | 0.88 |
| PANEL BORE DIA. | 0.84 |

GENERAL

| | |
|-------------------|--|
| Pressure Rating | 4500 PSI |
| Assembly Material | Carbon Steel, ASTM A108 |
| O-Ring Material | Viton® Fluorocarbon Type 1, Class 2 (90 durometer) |
| Connection 1 Type | Female Tube Socket |
| Connection 1 Size | 1/2" Tube O.D. (-08) |
| Connection 2 Type | Female Tube Socket |
| Connection 2 Size | 1/2" Tube O.D. (-08) |