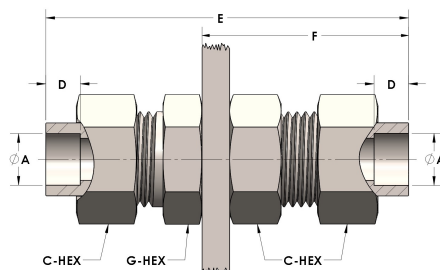


Product Category

H890-10-M

Part Description

Socketweld/braze Tube Bulkhead Union Assembly



DIMENSIONS

A	0.630
C-HEX	1.13
D	0.380
E	3.50
F	1.94
G-HEX	1.06
PANEL BORE DIA.	1.04

GENERAL

Pressure Rating	6000 PSI
Assembly Material	Monel®, ASTM B164, UNS N04405
O-Ring Material	Viton® Fluorocarbon Type 1, Class 2 (90 durometer)
Connection 1 Type	Female Tube Socket
Connection 1 Size	5/8" Tube O.D. (-10)
Connection 2 Type	Female Tube Socket
Connection 2 Size	5/8" Tube O.D. (-10)