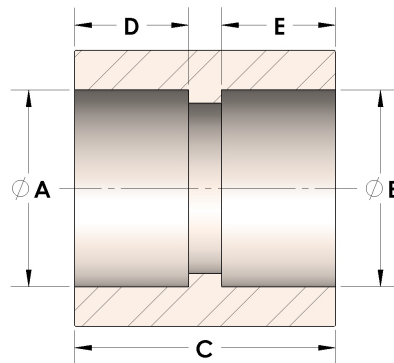


**Part Number:**

100-0-CUNI

**Part Description:**

Direct Socketweld/Braze Coupling (Pipe)



## DIMENSIONS

A:	0.42
B:	0.42
C :	1.06
D :	0.38
E:	0.38

## GENERAL

Pressure Rating:	6000 PSI
Fitting Material:	Copper Nickel 70/30, MIL-C--15726F, UNS C71500