

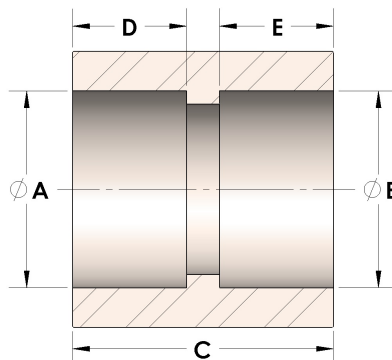


Product Category

100-0-S

Part Description

Direct Socketweld/Braze Coupling (Pipe)



DIMENSIONS

A	0.42
B	0.42
C	1.06
D	0.38
E	0.38

GENERAL

Pressure Rating	6000 PSI
Fitting Material	Carbon Steel, ASTM A36/311, UNS K02600/G10180