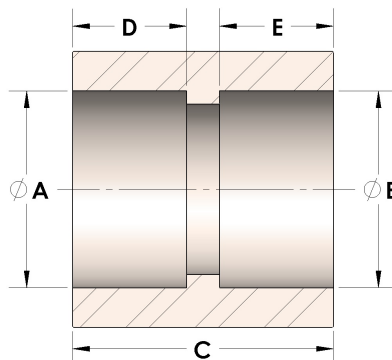


**Product Category**

100-1-CUNI

**Part Description**

Direct Socketweld/Braze Coupling (Pipe)



## DIMENSIONS

<b>A</b>	0.555
<b>B</b>	0.555
<b>C</b>	1.06
<b>D</b>	0.38
<b>E</b>	0.38

## GENERAL

<b>Pressure Rating</b>	4500 PSI
<b>Fitting Material</b>	Copper Nickel 70/30, MIL-C--15726F, UNS C71500